

PREPARED BY: AERIAL SURVEY & PHOTO, INC.
 NORRIDGEWOCK, MAINE
 NOTE: FOR ASSESSMENT PURPOSES ONLY, NOT TO BE USED FOR CONVEYANCES

LEGEND: PARCEL NUMBER.....12
 ADJACENT MAP.....M5

FRANKLIN

PROPERTY MAP
 TOWN OF EASTBROOK

100 0 200 400 600 800 FEET
 SCALE 1"=200'



WALTHAM

74
6.7 AC.
TOWN

WEBB POND

M 3

70
15 AC.

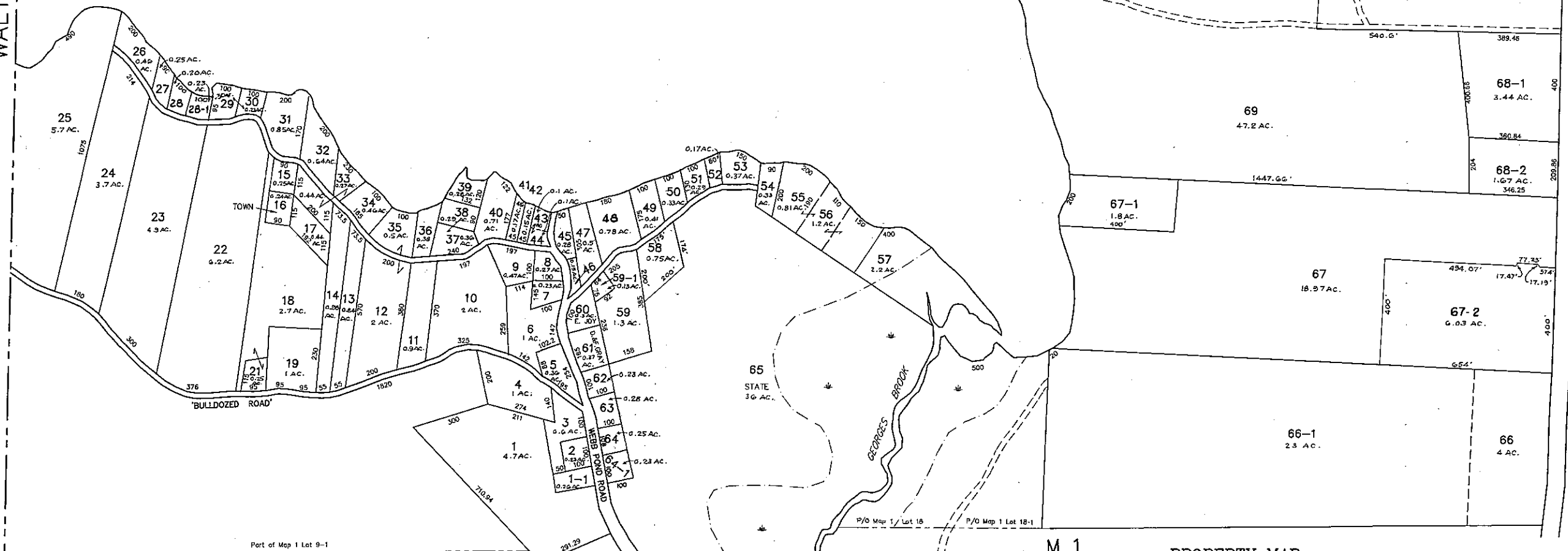
71
183 AC.

73
0.8 AC.

72
3.7 AC.

ROUTE # 200

M 6



'BULDOZED ROAD'

GEORGE'S BROOK

Part of Map 1 Lot 9-1

P/O Map 1 Lot 18 P/O Map 1 Lot 18-1

PREPARED BY: AERIAL SURVEY & PHOTO, INC.
NORRIDGEWOCK, MAINE
NOTE: FOR ASSESSMENT PURPOSES ONLY, NOT TO BE USED FOR CONVEYANCES

M 1

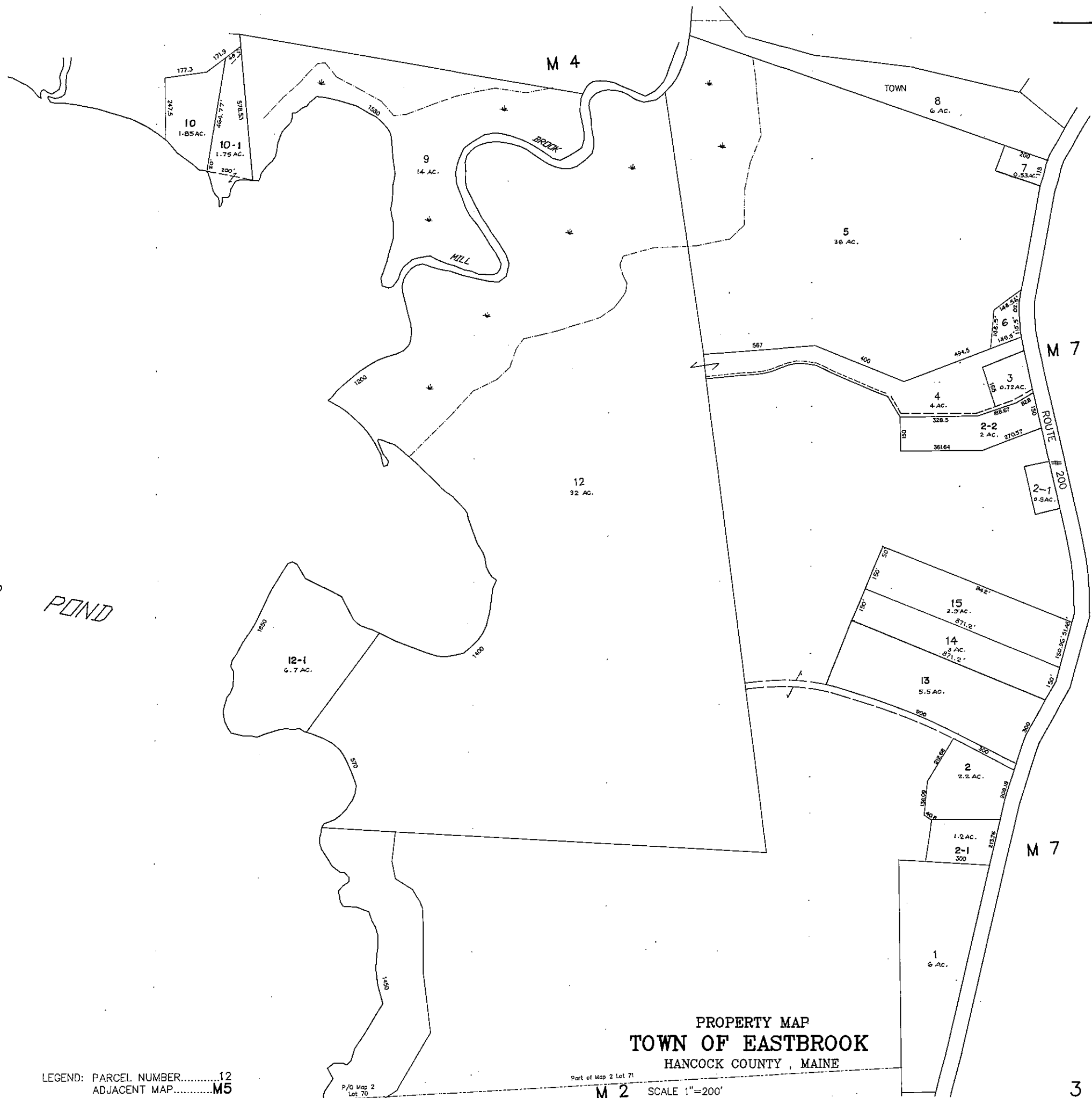
LEGEND: PARCEL NUMBER.....12
ADJACENT MAP.....M5

M 1

PROPERTY MAP
TOWN OF EASTBROOK
HANCOCK COUNTY, MAINE



WALTHAM



TOWN
P/O Map 2
Lot 76

PREPARED BY: AERIAL SURVEY & PHOTO, INC.
NORRIDGEWOCK, MAINE
NOTE: FOR ASSESSMENT PURPOSES ONLY, NOT TO BE USED FOR CONVEYANCES

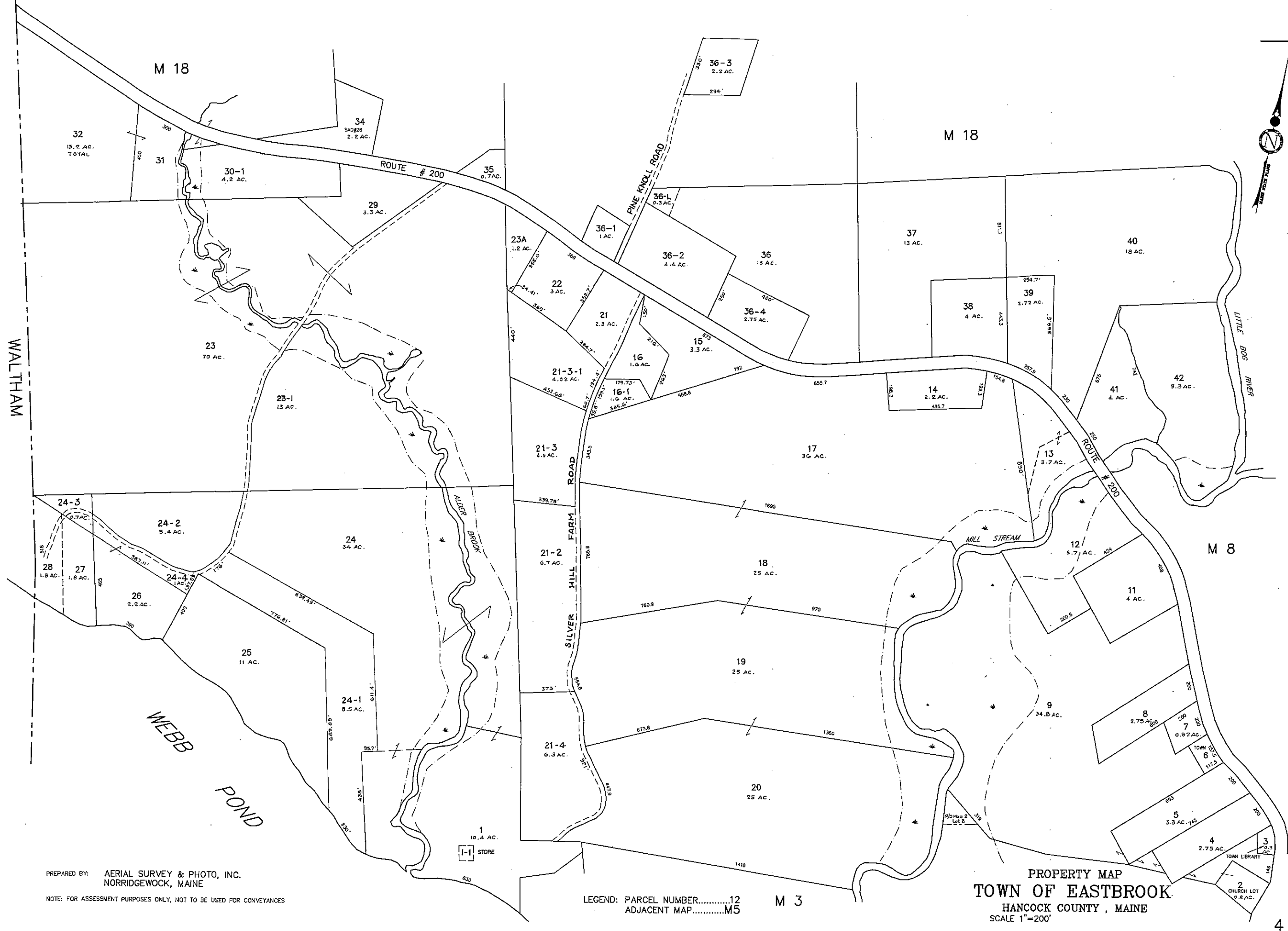
LEGEND: PARCEL NUMBER.....12
ADJACENT MAP.....M5

P/O Map 2
Lot 76

Part of Map 2 Lot 71
M 2 SCALE 1"=200'

PROPERTY MAP
TOWN OF EASTBROOK
HANCOCK COUNTY, MAINE

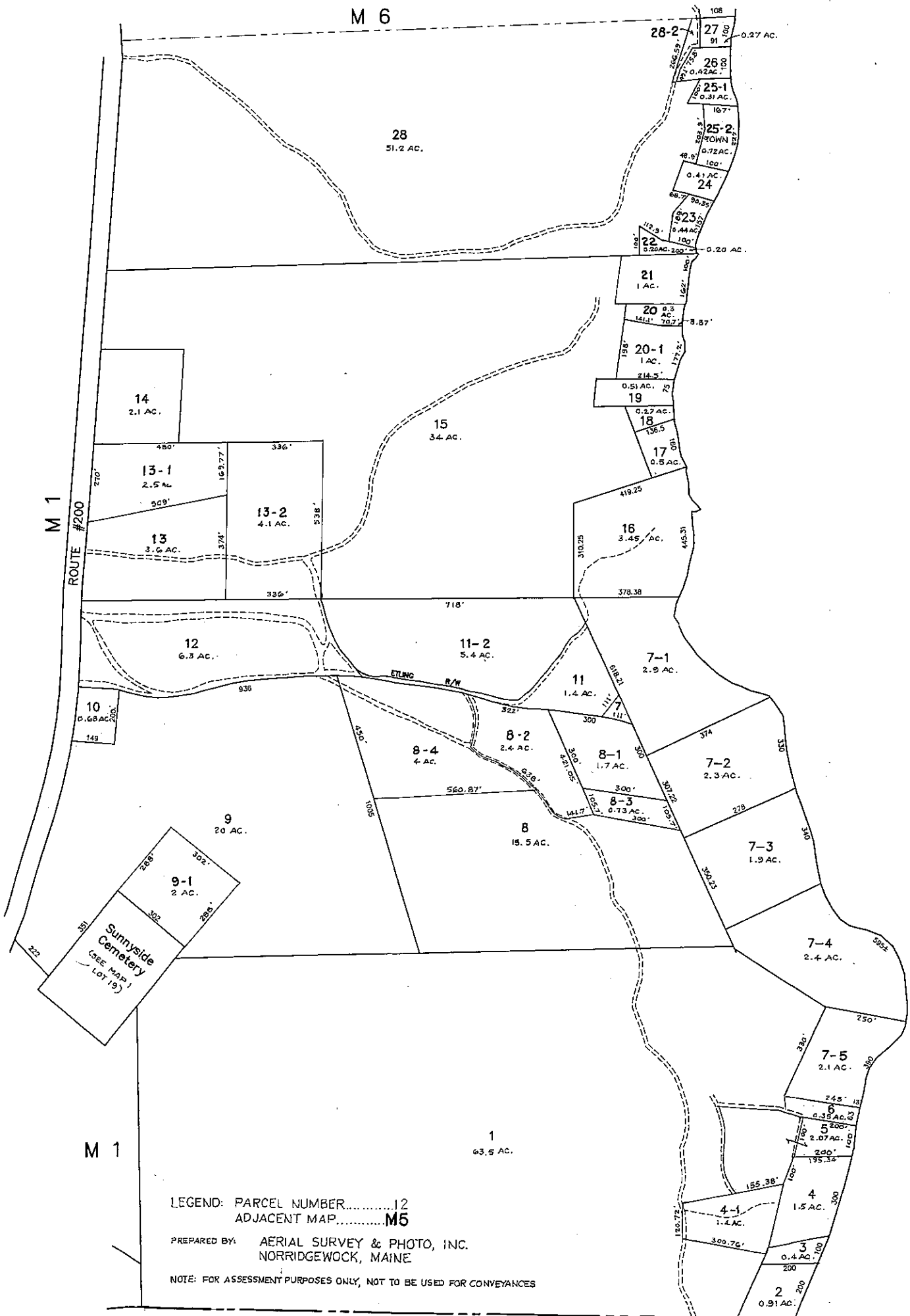
3



PREPARED BY: AERIAL SURVEY & PHOTO, INC.
 NORRIDGEWOCK, MAINE
 NOTE: FOR ASSESSMENT PURPOSES ONLY, NOT TO BE USED FOR CONVEYANCES

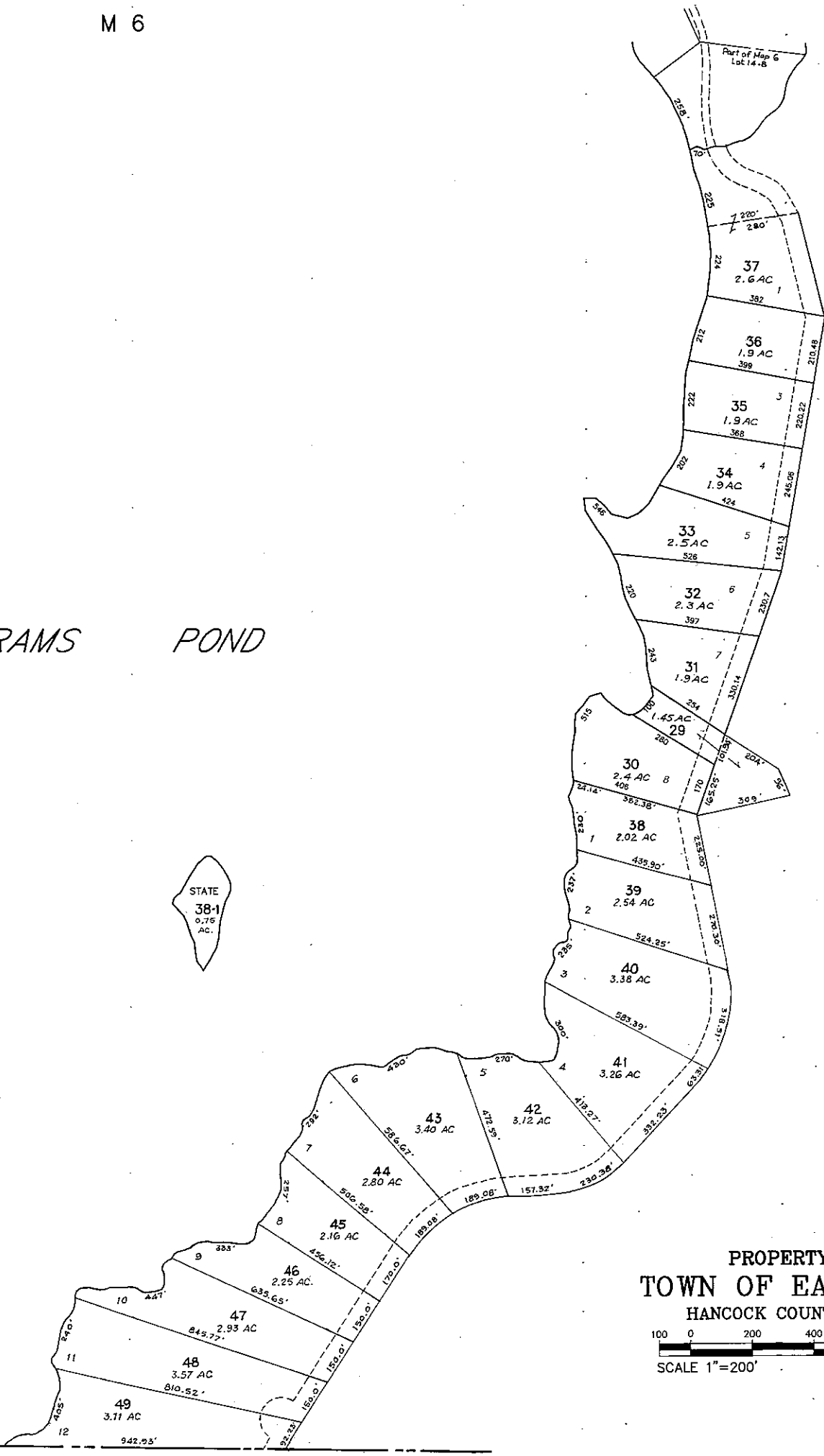
LEGEND: PARCEL NUMBER.....12
 ADJACENT MAP.....M5 M 3

PROPERTY MAP
TOWN OF EASTBROOK
 HANCOCK COUNTY, MAINE
 SCALE 1"=200'

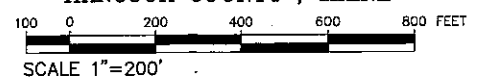


ABRAMS POND

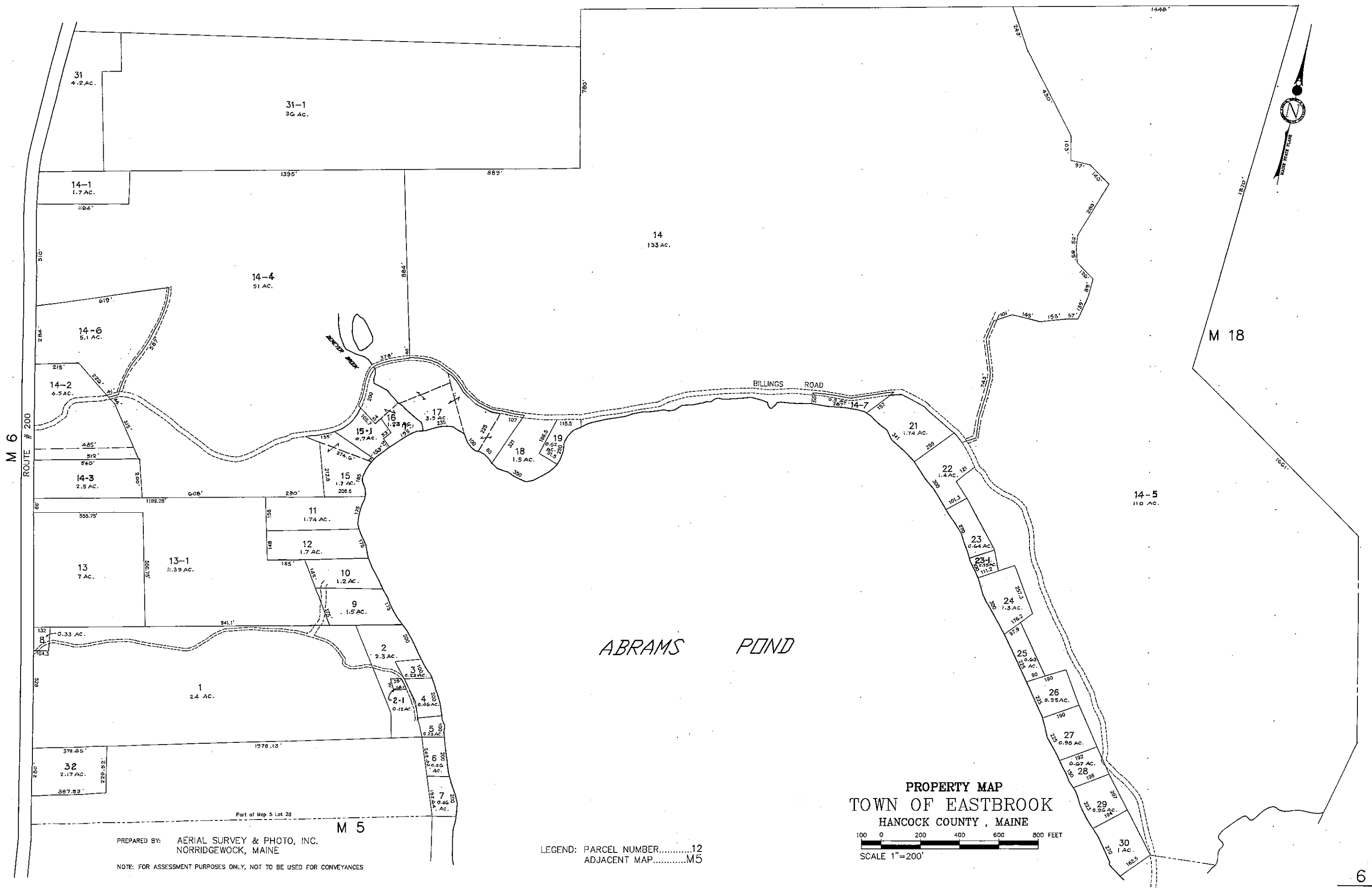
STATE
38-1
0.75 AC.



PROPERTY MAP
TOWN OF EASTBROOK
HANCOCK COUNTY, MAINE
SCALE 1"=200'



M 7

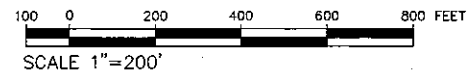


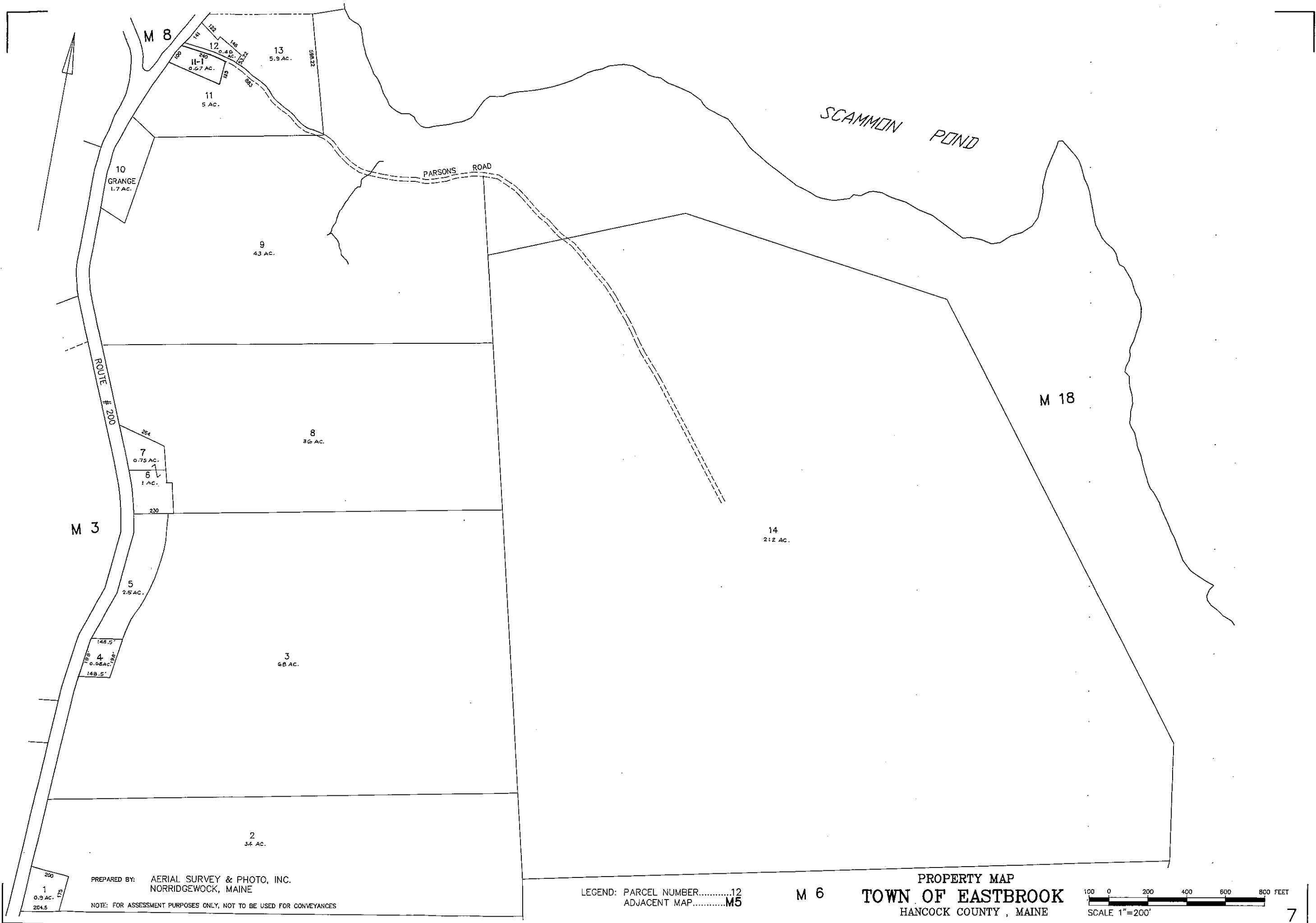
PREPARED BY: AERIAL SURVEY & PHOTO, INC.
NORRIDGEWOCK, MAINE

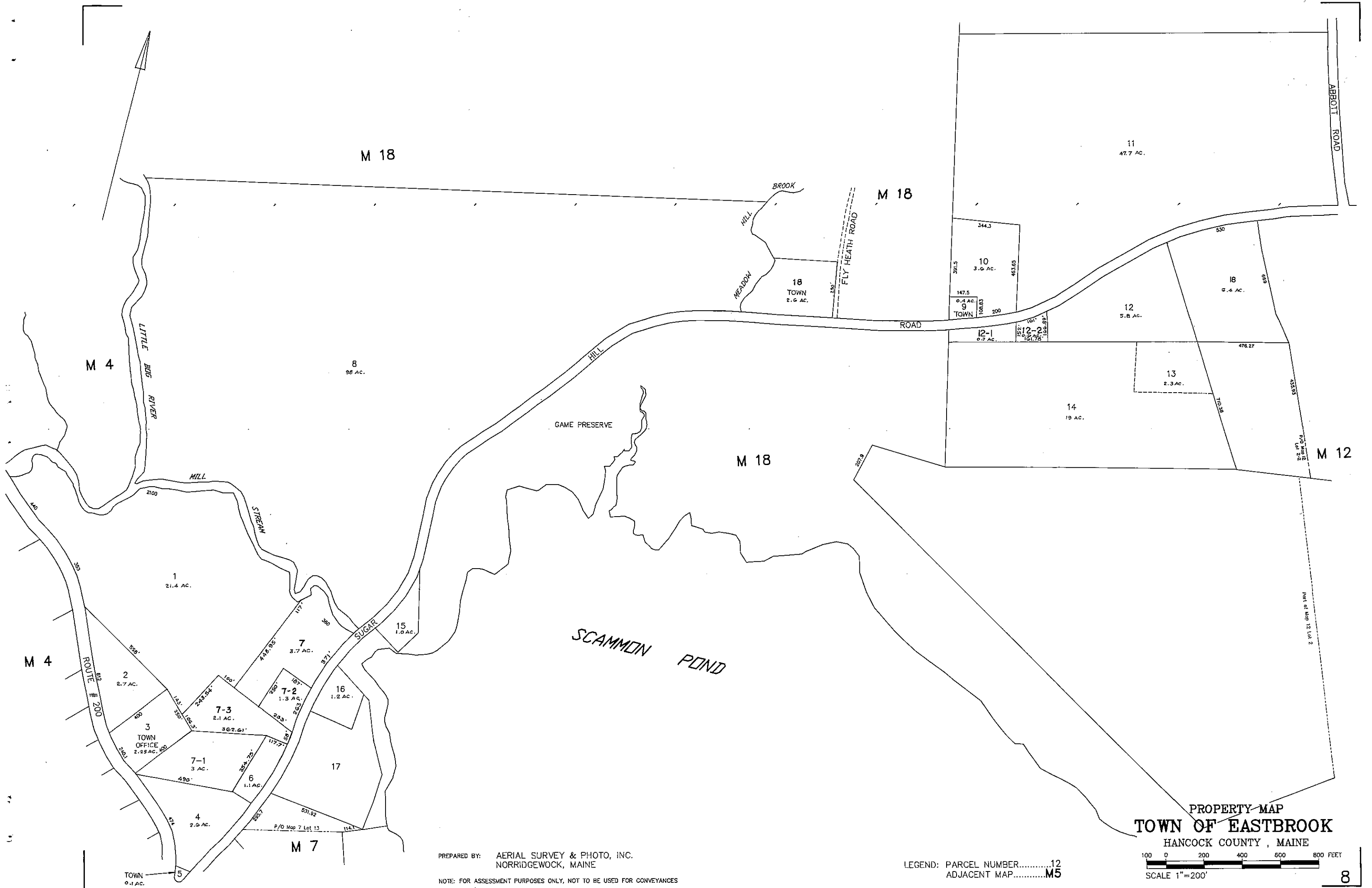
NOTE: FOR ASSESSMENT PURPOSES ONLY, NOT TO BE USED FOR CONVEYANCES

LEGEND: PARCEL NUMBER.....12
ADJACENT MAP.....M5

PROPERTY MAP
TOWN OF EASTBROOK
HANCOCK COUNTY, MAINE







M 18

M 18

M 4

8
96 AC.

M 18

M 12

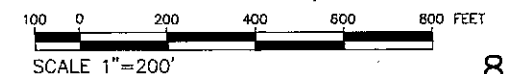
M 4

M 7

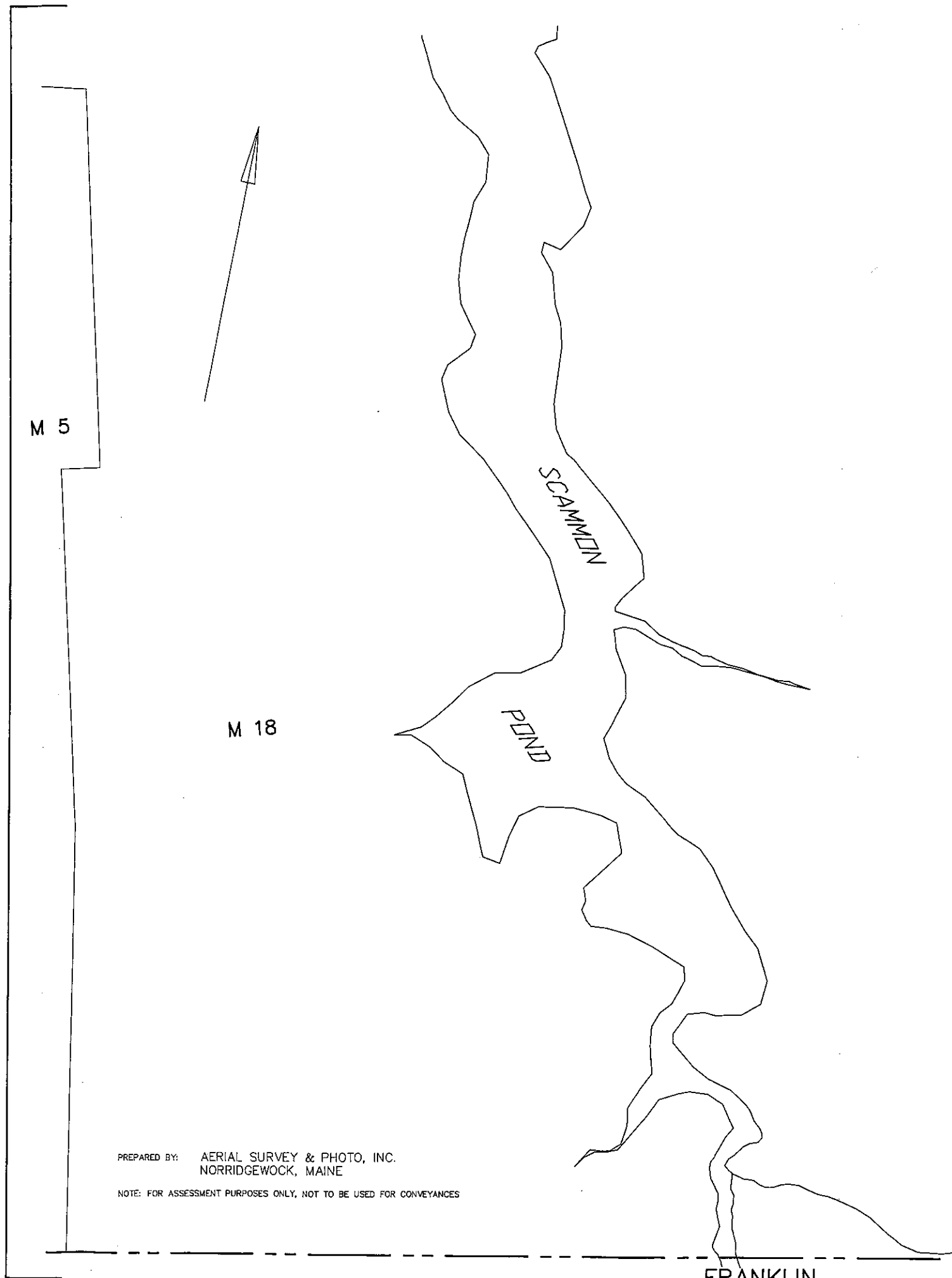
PROPERTY MAP
TOWN OF EASTBROOK
 HANCOCK COUNTY, MAINE

PREPARED BY: AERIAL SURVEY & PHOTO, INC.
 NORRIDGEWOCK, MAINE

LEGEND: PARCEL NUMBER.....12
 ADJACENT MAP.....M5

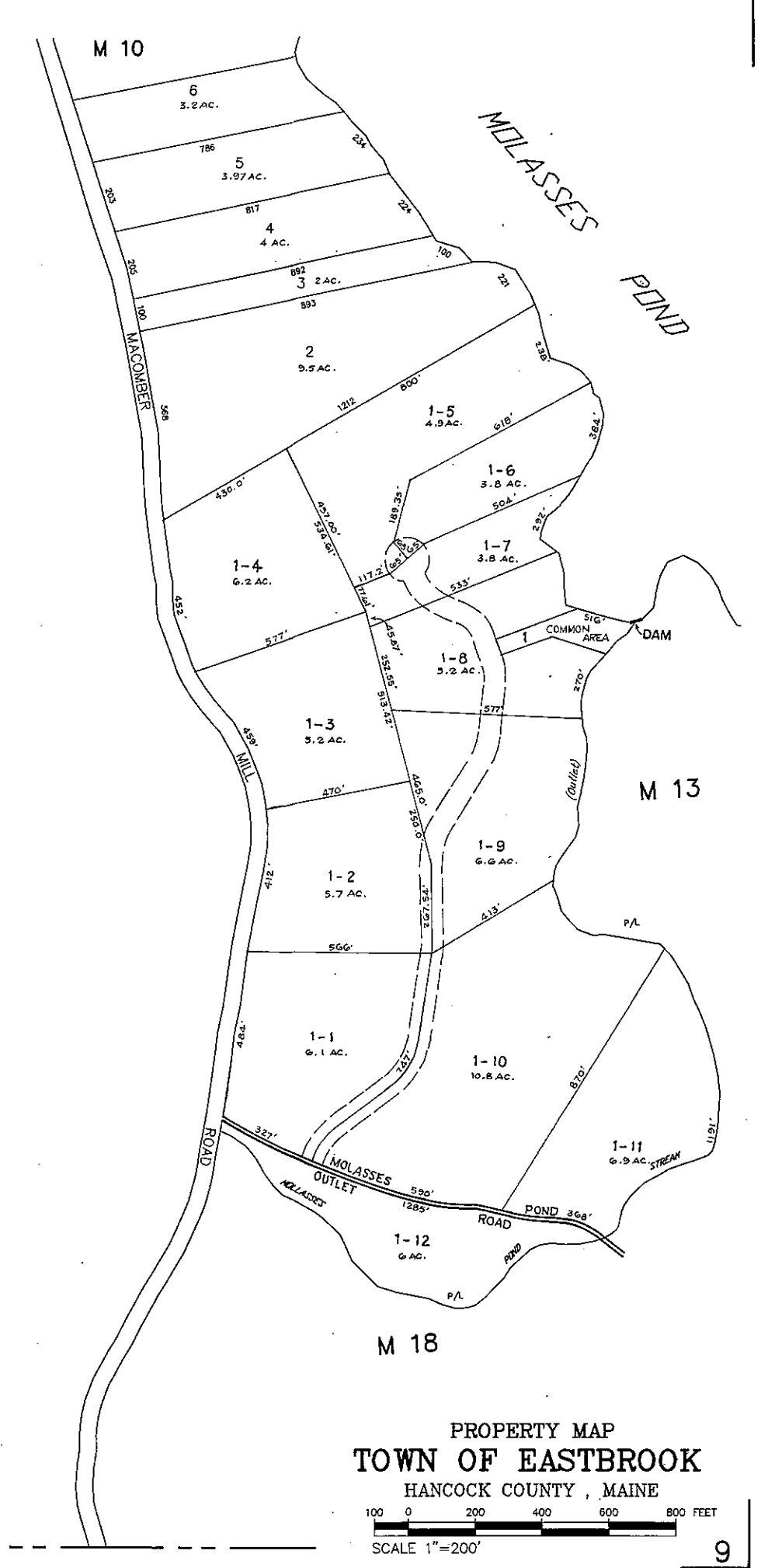


NOTE: FOR ASSESSMENT PURPOSES ONLY, NOT TO BE USED FOR CONVEYANCES

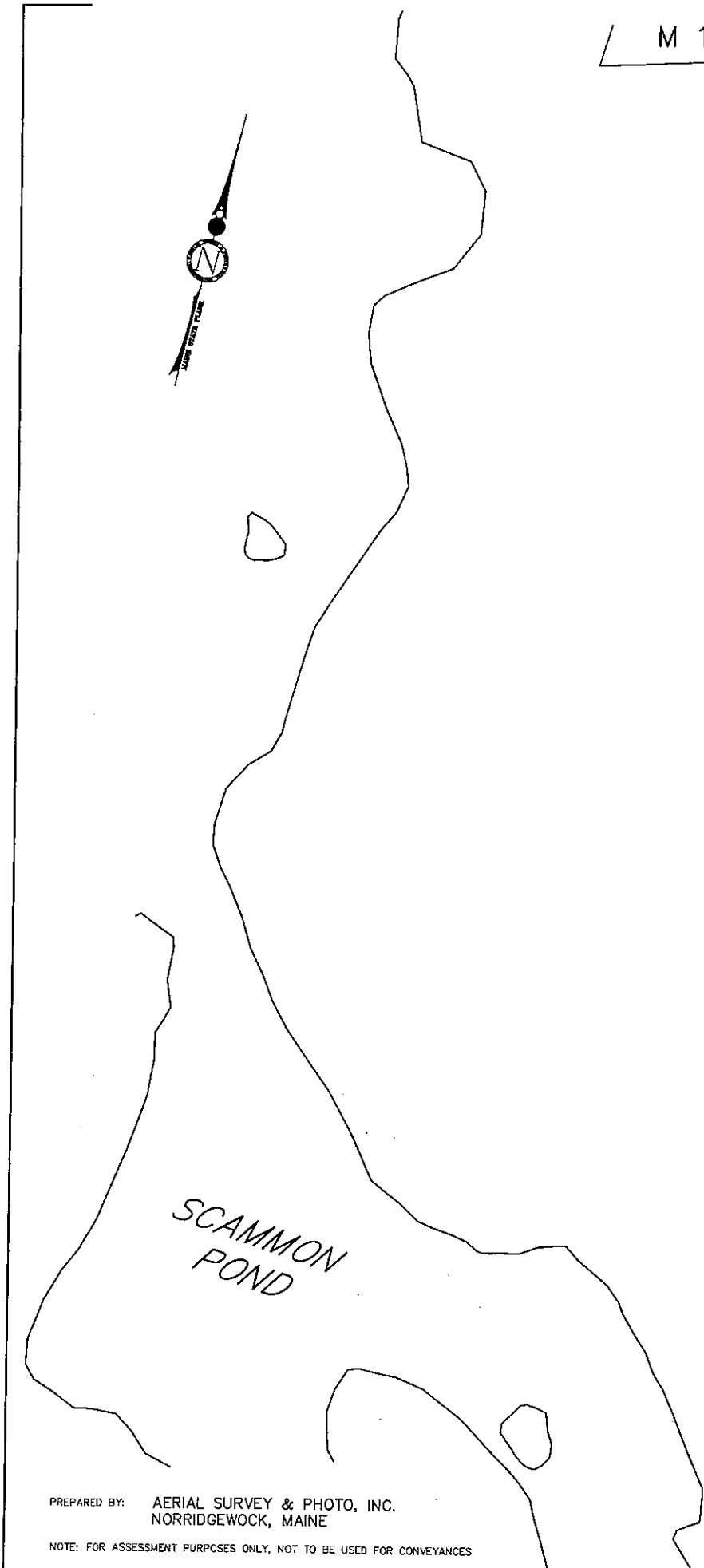


PREPARED BY: AERIAL SURVEY & PHOTO, INC.
 NORRIDGEWOCK, MAINE
 NOTE: FOR ASSESSMENT PURPOSES ONLY, NOT TO BE USED FOR CONVEYANCES

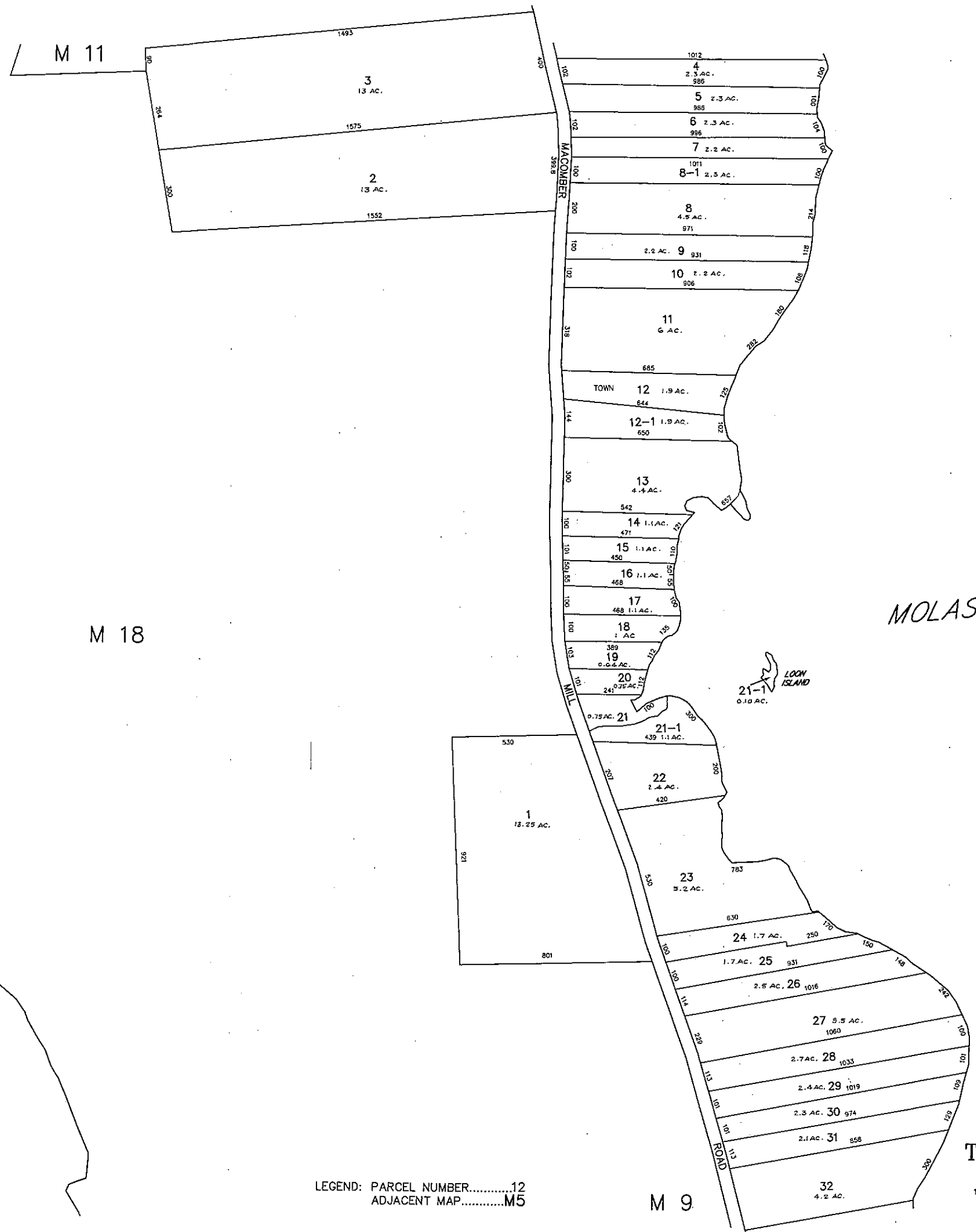
LEGEND: PARCEL NUMBER.....12
 ADJACENT MAP.....M5



PROPERTY MAP
TOWN OF EASTBROOK
 HANCOCK COUNTY, MAINE
 SCALE 1"=200'



PREPARED BY: AERIAL SURVEY & PHOTO, INC.
 NORRIDGEWOCK, MAINE
 NOTE: FOR ASSESSMENT PURPOSES ONLY, NOT TO BE USED FOR CONVEYANCES

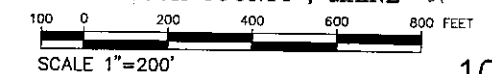


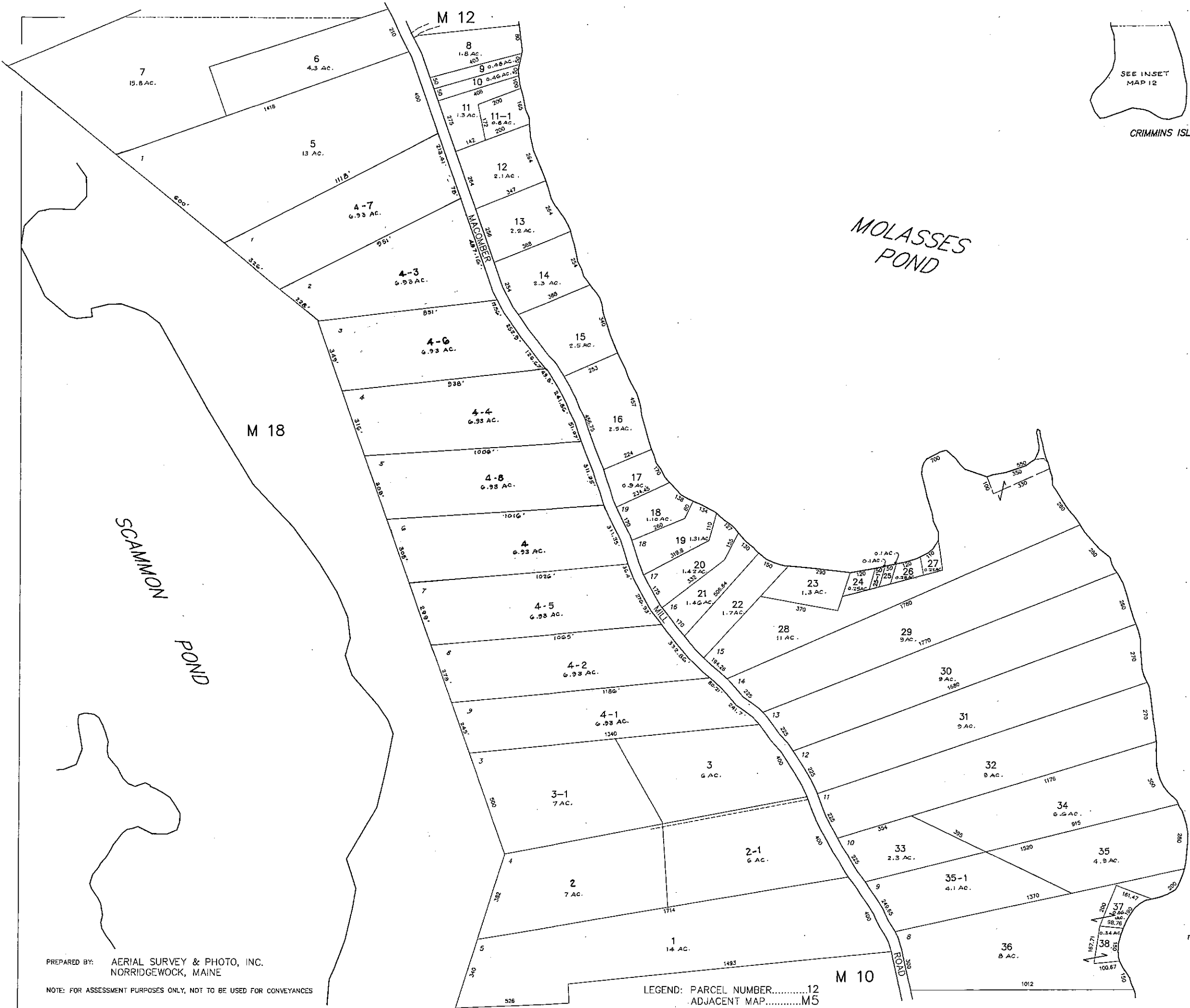
LEGEND: PARCEL NUMBER.....12
 ADJACENT MAP.....M5

MOLASSES POND

LOON ISLAND
 0.10 AC.

PROPERTY MAP
 TOWN OF EASTBROOK
 HANCOCK COUNTY, MAINE



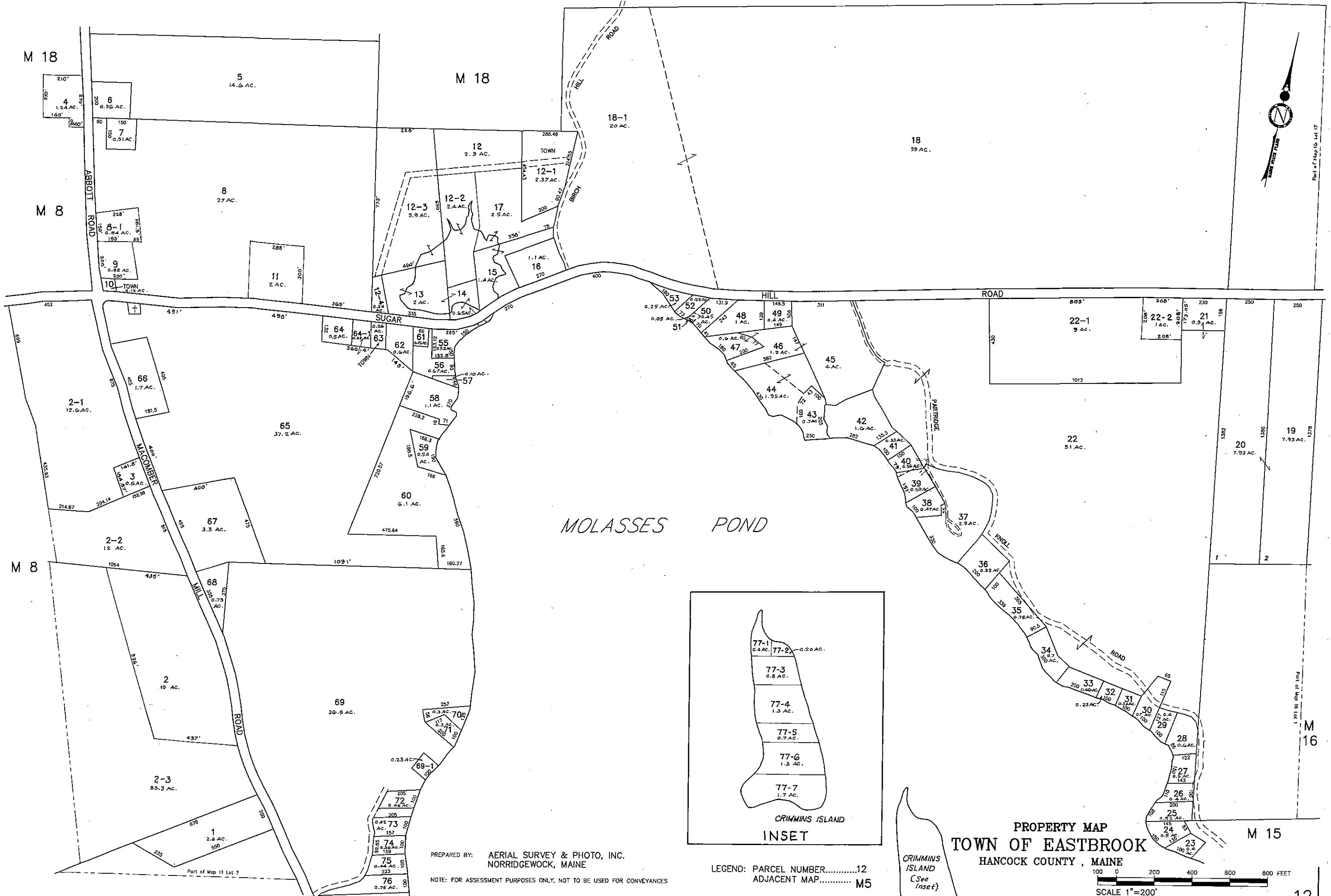


PREPARED BY: AERIAL SURVEY & PHOTO, INC.
NORRIDGEWOCK, MAINE

NOTE: FOR ASSESSMENT PURPOSES ONLY, NOT TO BE USED FOR CONVEYANCES

LEGEND: PARCEL NUMBER.....12
ADJACENT MAP.....M5

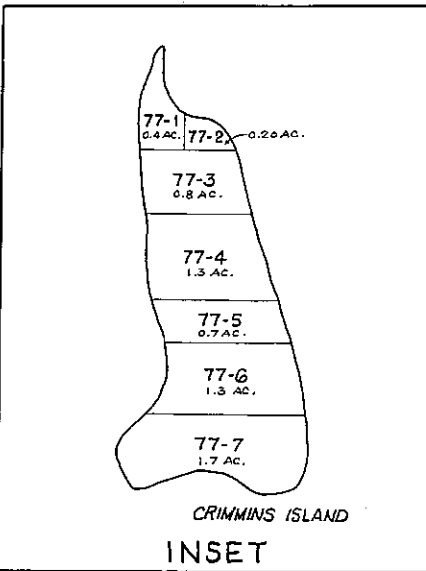
PROPERTY MAP
TOWN OF EASTBROOK
HANCOCK COUNTY, MAINE
SCALE 1"=200'



Part of Map 15, Lot 17

Part of Map 16, Lot 1

MOLASSES POND



CRIMMINS ISLAND
INSET

CRIMMINS ISLAND
(See Inset)

PREPARED BY: AERIAL SURVEY & PHOTO, INC.
NORRIDGEWOCK, MAINE
NOTE: FOR ASSESSMENT PURPOSES ONLY, NOT TO BE USED FOR CONVEYANCES

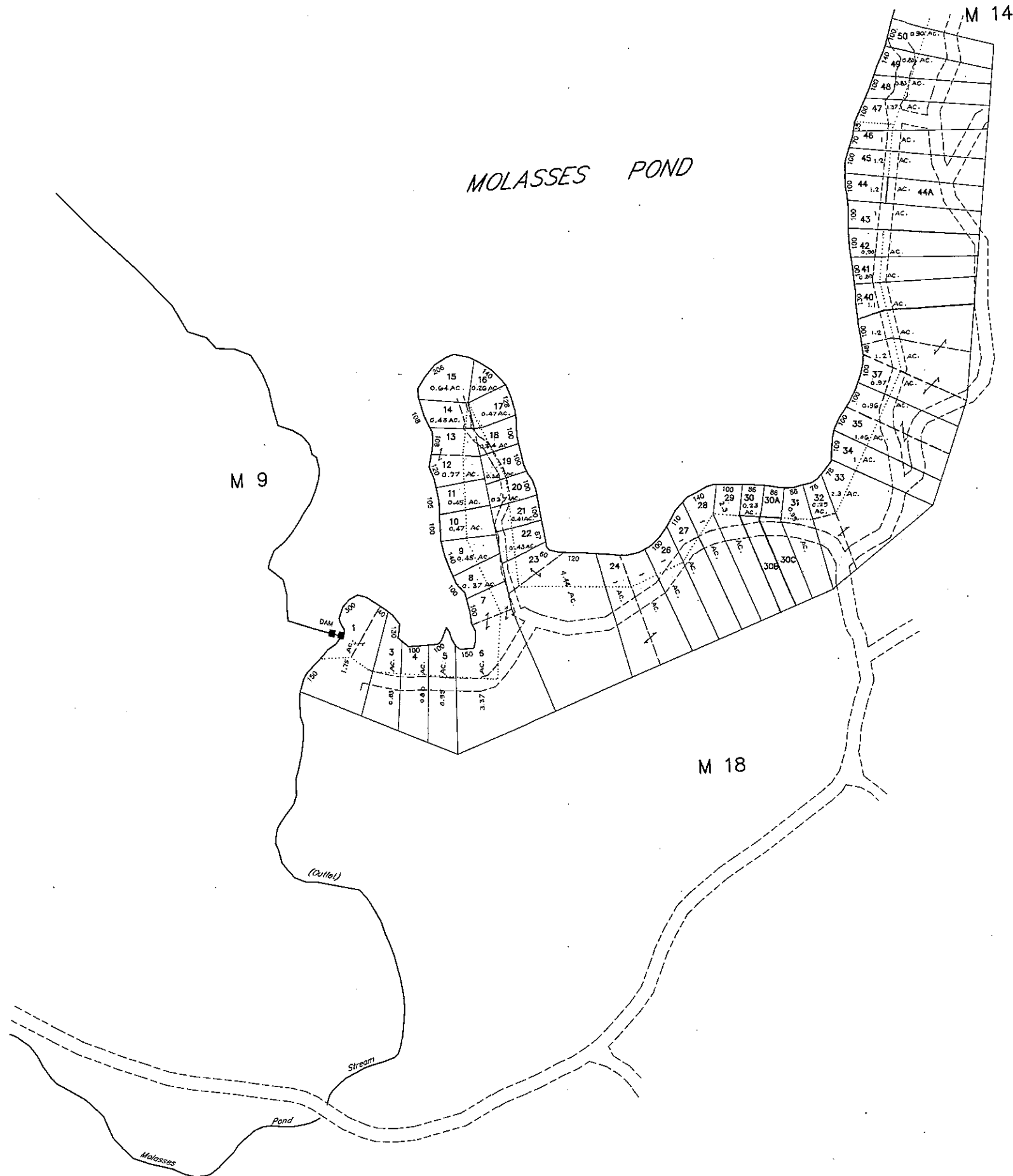
LEGEND: PARCEL NUMBER.....12
ADJACENT MAP..... M5

PROPERTY MAP
TOWN OF EASTBROOK
HANCOCK COUNTY, MAINE





MOLASSES POND



PREPARED BY: AERIAL SURVEY & PHOTO, INC.
NORRIDGEWOCK, MAINE

NOTE: FOR ASSESSMENT PURPOSES ONLY, NOT TO BE USED FOR CONVEYANCES

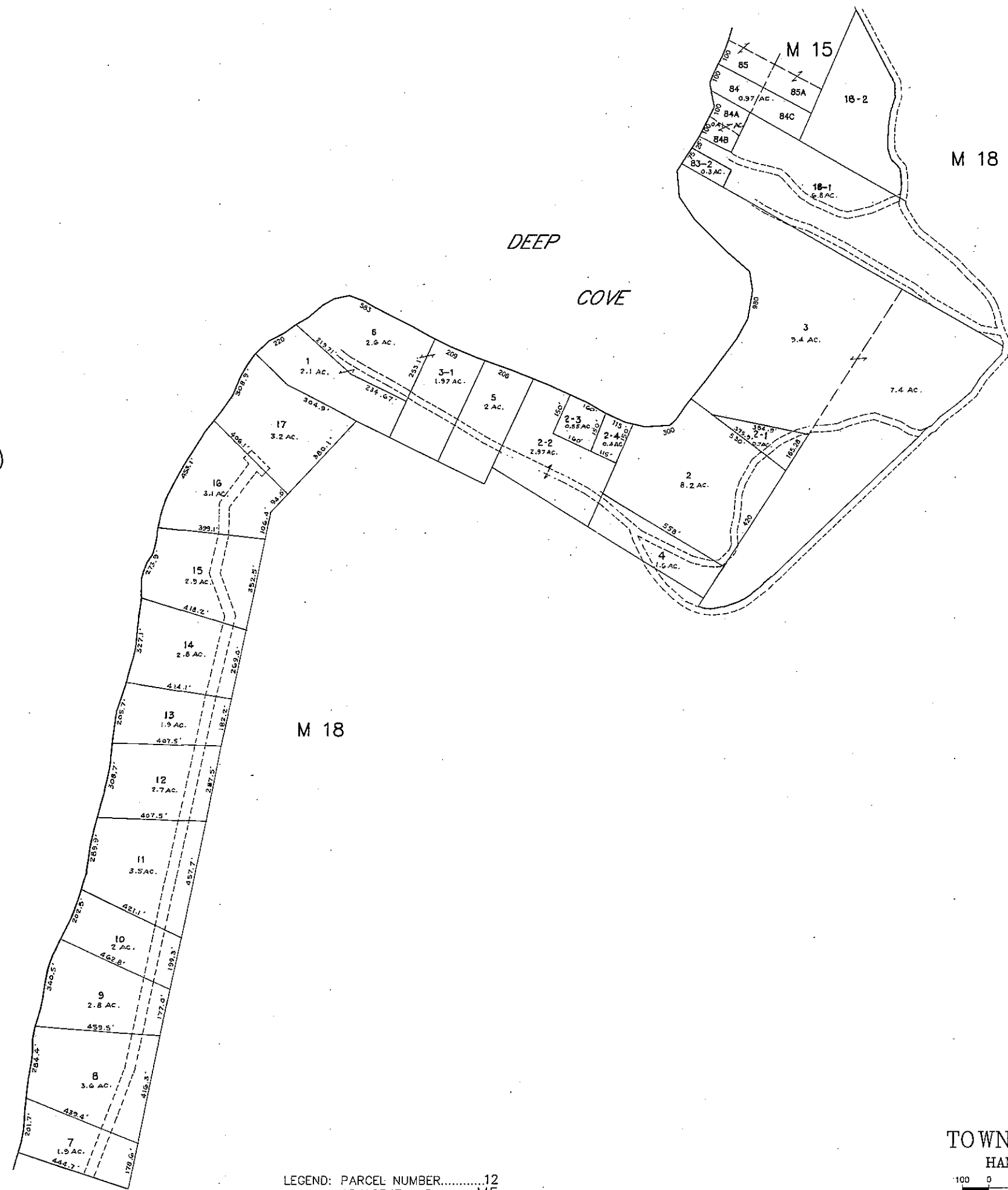
LEGEND: PARCEL NUMBER.....12
ADJACENT MAP.....M5

PROPERTY MAP
TOWN OF EASTBROOK
HANCOCK COUNTY, MAINE





MOLASSES POND



PREPARED BY: AERIAL SURVEY & PHOTO, INC.
NORRIDGEWOCK, MAINE

NOTE: FOR ASSESSMENT PURPOSES ONLY, NOT TO BE USED FOR CONVEYANCES

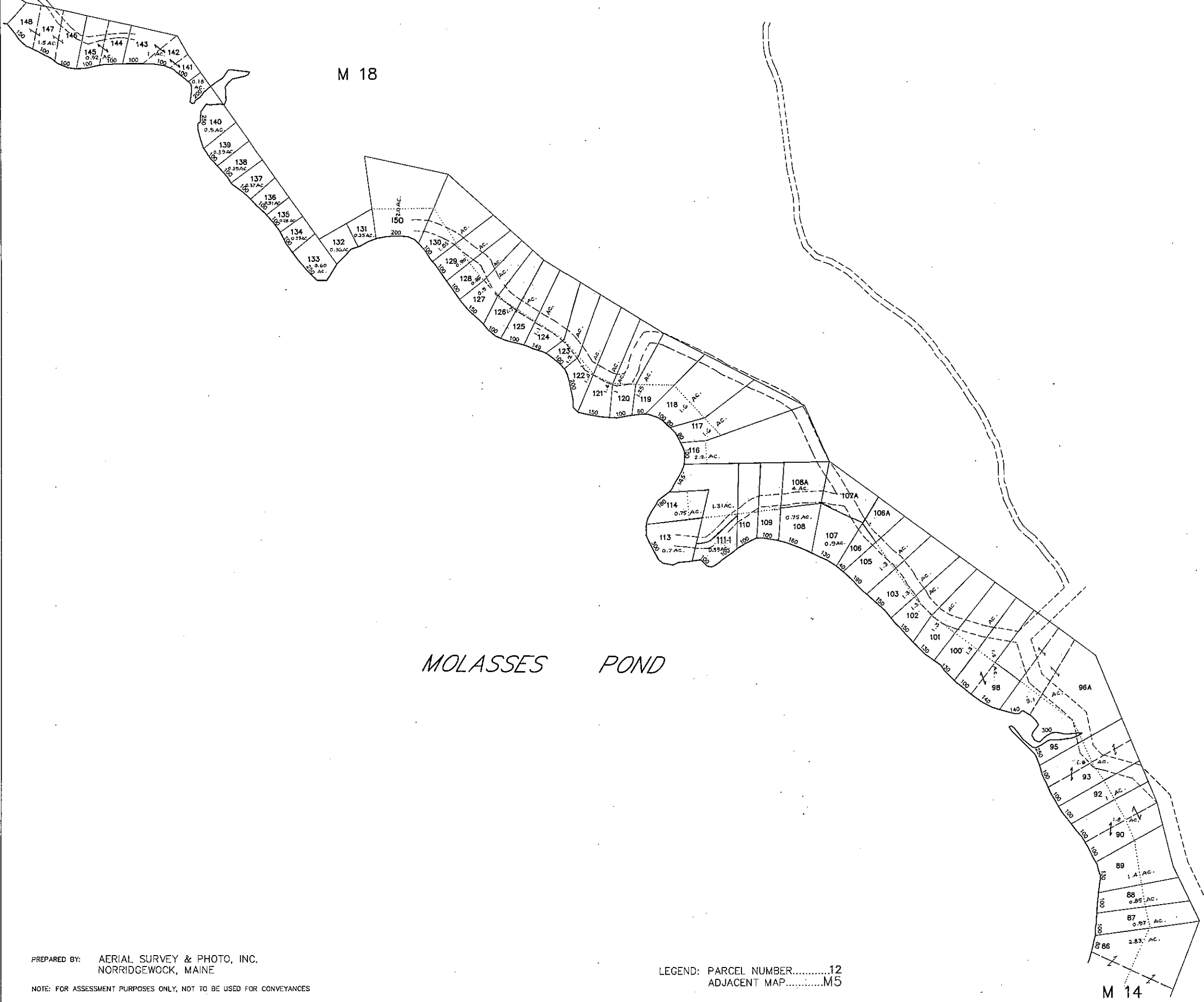
LEGEND: PARCEL NUMBER.....12
ADJACENT MAP.....M5

PROPERTY MAP
TOWN OF EASTBROOK
HANCOCK COUNTY, MAINE



M 12

M 18

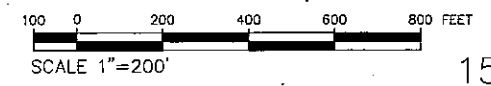


MOLASSES POND

M 18

M 14

PROPERTY MAP
TOWN OF EASTBROOK
HANCOCK COUNTY, MAINE

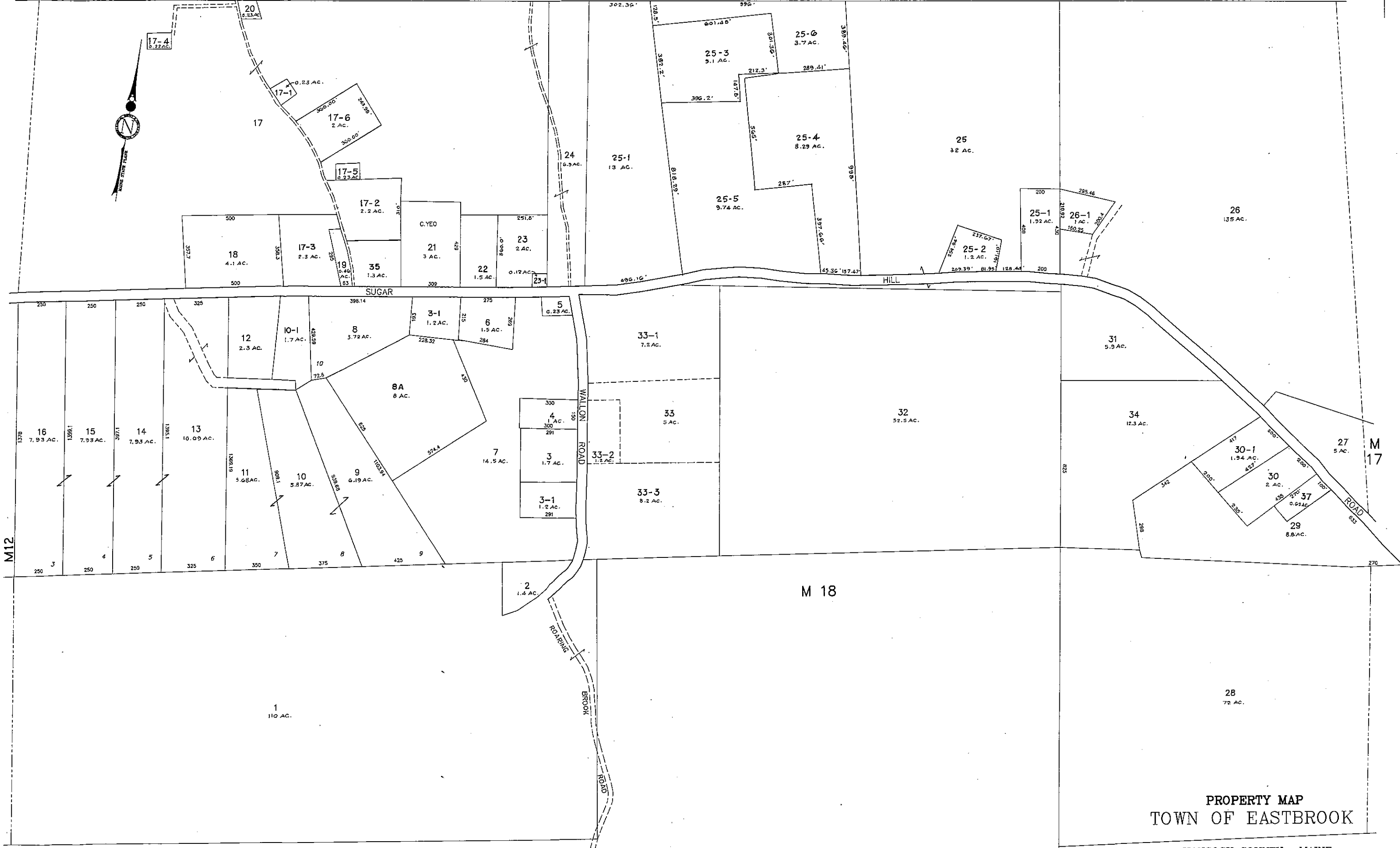


15

PREPARED BY: AERIAL SURVEY & PHOTO, INC.
NORRIDGEWOCK, MAINE

NOTE: FOR ASSESSMENT PURPOSES ONLY, NOT TO BE USED FOR CONVEYANCES

LEGEND: PARCEL NUMBER.....12
ADJACENT MAP.....M5

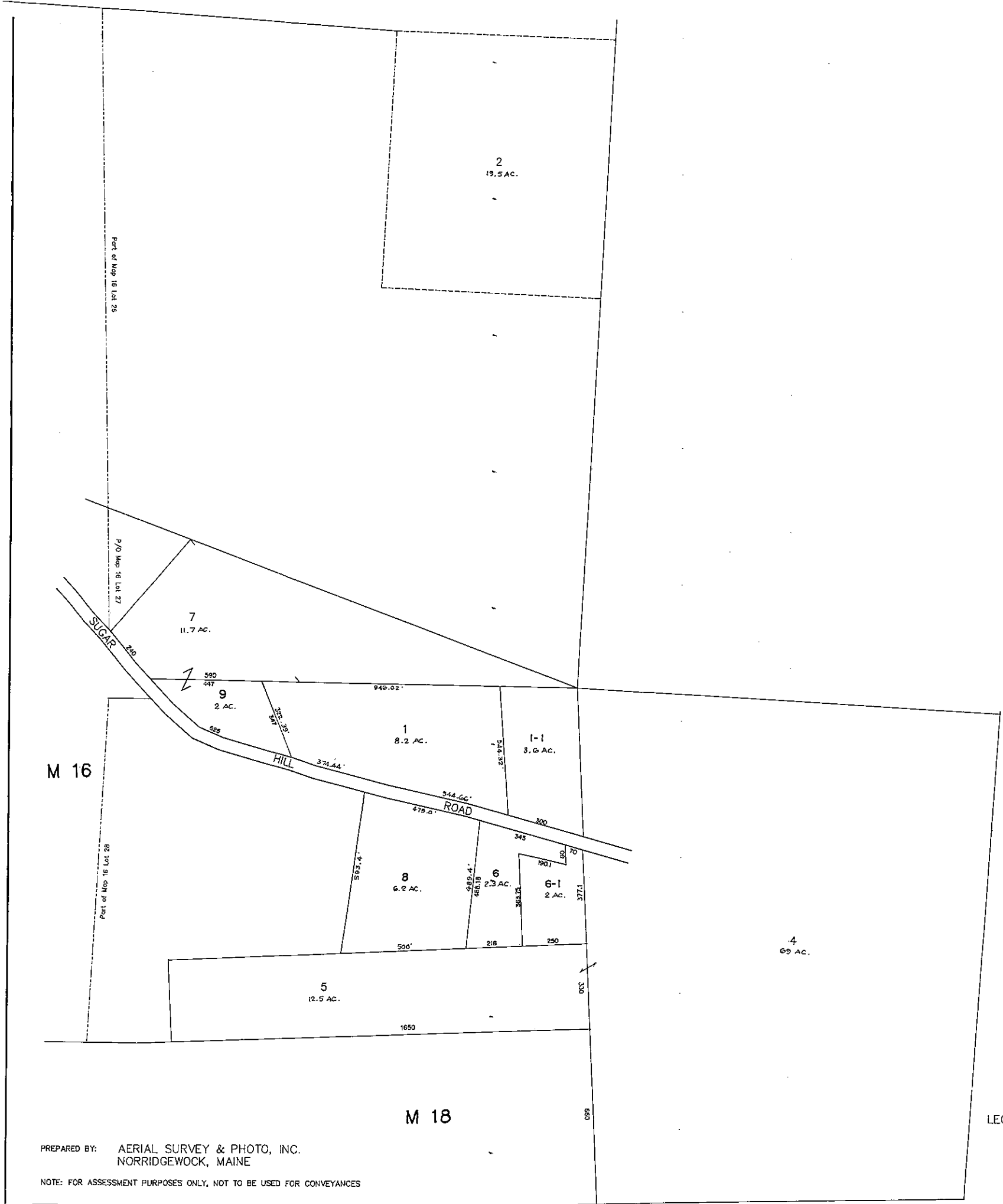


PREPARED BY: AERIAL SURVEY & PHOTO, INC.
 NORRIDGEWOCK, MAINE
 NOTE: FOR ASSESSMENT PURPOSES ONLY, NOT TO BE USED FOR CONVEYANCES

LEGEND: PARCEL NUMBER.....12
 ADJACENT MAP.....M5

HANCOCK COUNTY, MAINE
 100 0 200 400 600 800 FEET
 SCALE 1"=200'

PROPERTY MAP
 TOWN OF EASTBROOK

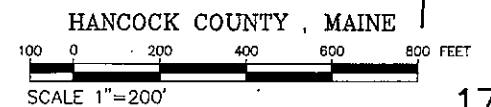


PREPARED BY: AERIAL SURVEY & PHOTO, INC.
 NORRIDGEWOCK, MAINE

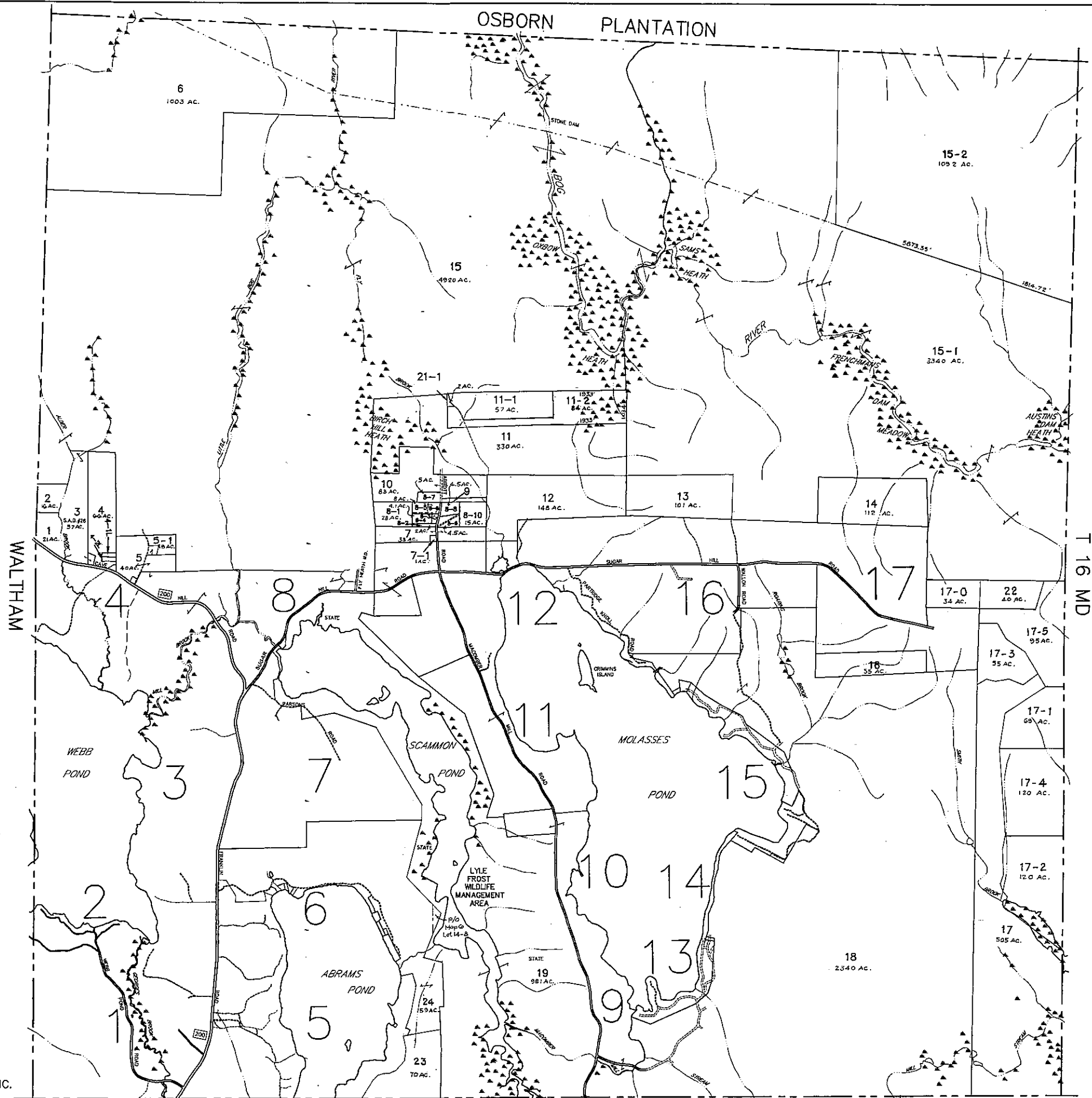
NOTE: FOR ASSESSMENT PURPOSES ONLY, NOT TO BE USED FOR CONVEYANCES

LEGEND: PARCEL NUMBER.....12
 ADJACENT MAP.....M5

PROPERTY MAP
 TOWN OF EASTBROOK



TOWNSHIP # 16 MD



PREPARED BY:
AERIAL SURVEY & PHOTO, INC.
NORRIDGEWOCK, MAINE

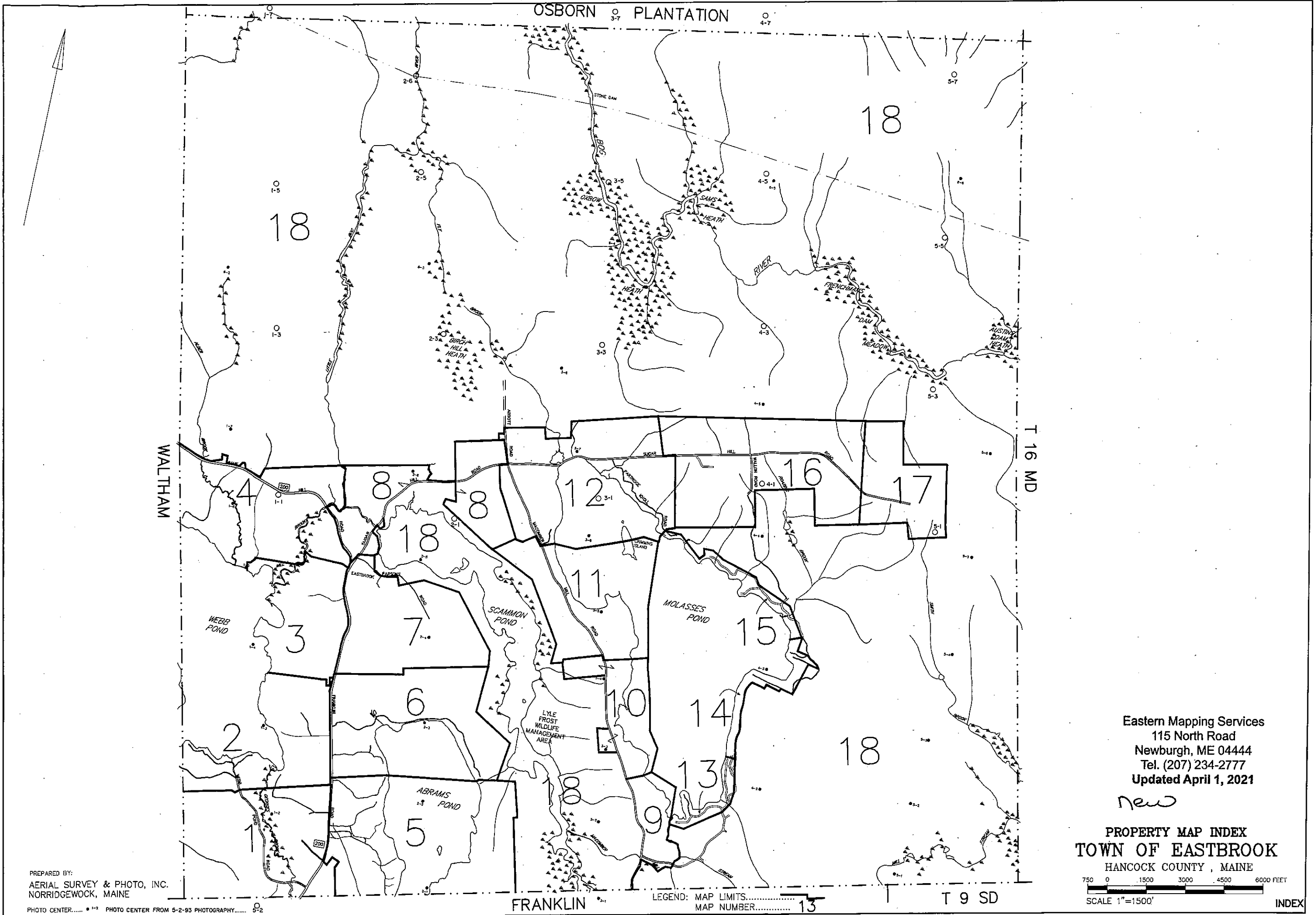
NOTE: FOR ASSESSMENT PURPOSES ONLY, NOT TO BE USED FOR CONVEYANCES

LEGEND: PARCEL NUMBER.....12
ADJACENT MAP.....13

PROPERTY MAP
TOWN OF EASTBROOK
HANCOCK COUNTY, MAINE

750 0 1500 3000 4500 6000 FEET

SCALE: 1"=1500'



PREPARED BY:
 AERIAL SURVEY & PHOTO, INC.
 NORRIDGEWOCK, MAINE

PHOTO CENTER..... PHOTO CENTER FROM 5-2-93 PHOTOGRAPHY.....

LEGEND: MAP LIMITS.....
 MAP NUMBER..... 13

Eastern Mapping Services
 115 North Road
 Newburgh, ME 04444
 Tel. (207) 234-2777
 Updated April 1, 2021

new

PROPERTY MAP INDEX
 TOWN OF EASTBROOK
 HANCOCK COUNTY, MAINE

750 0 1500 3000 4500 6000 FEET

SCALE 1"=1500'

INDEX